

www.csiro.au

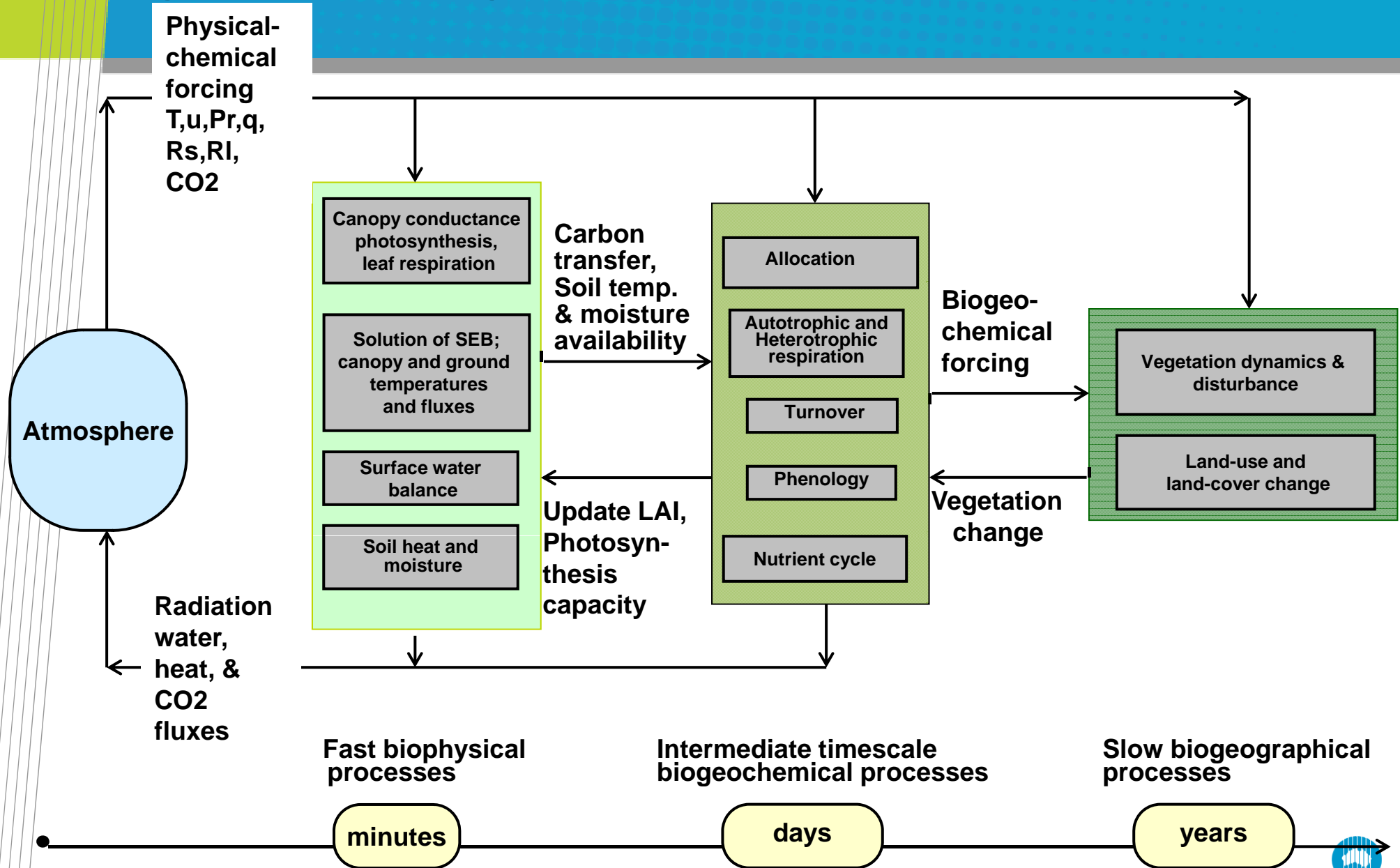
The Australian Terrestrial Carbon Balance: 1990-2009

The Ozflux Laugh Test

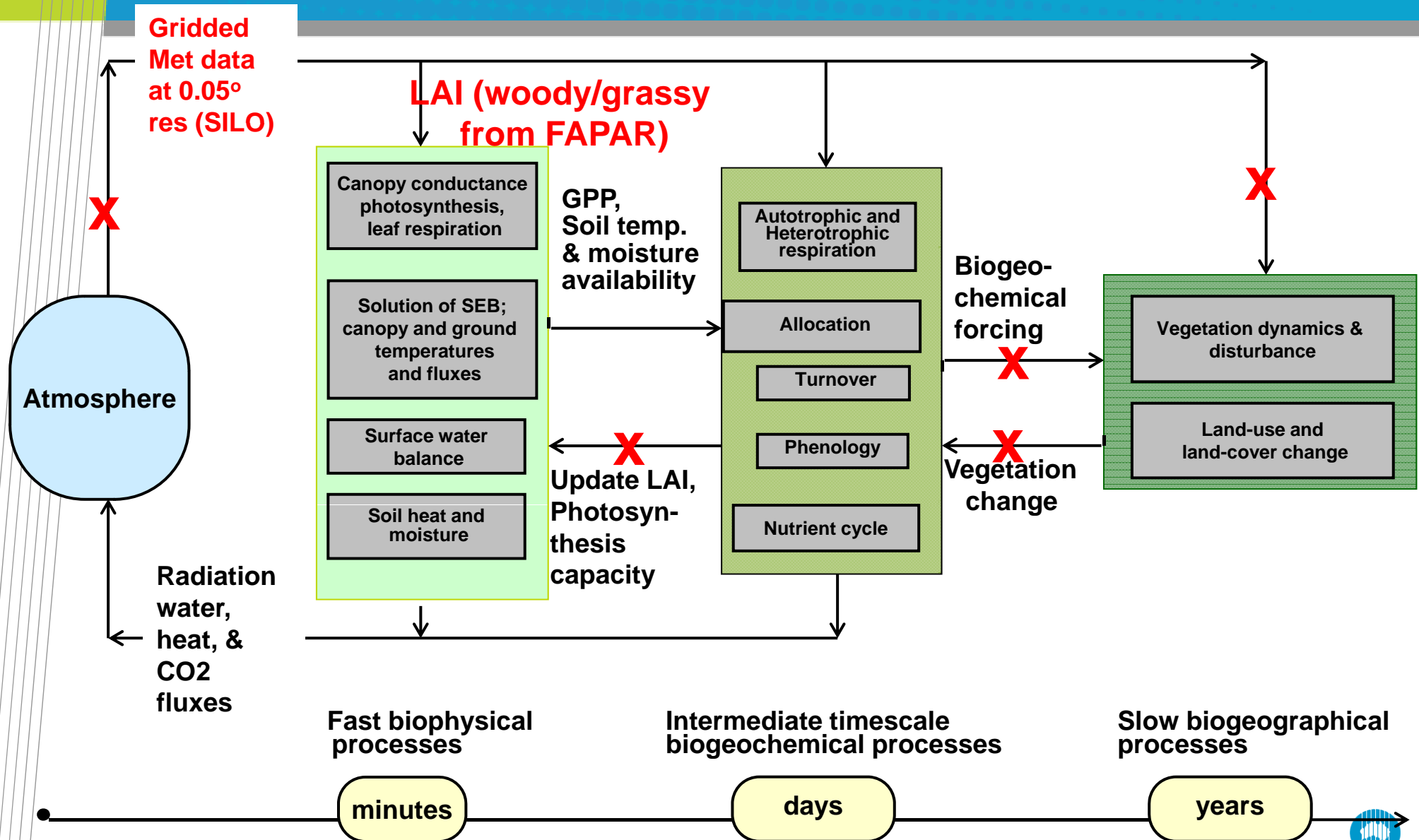
Vanessa Haverd



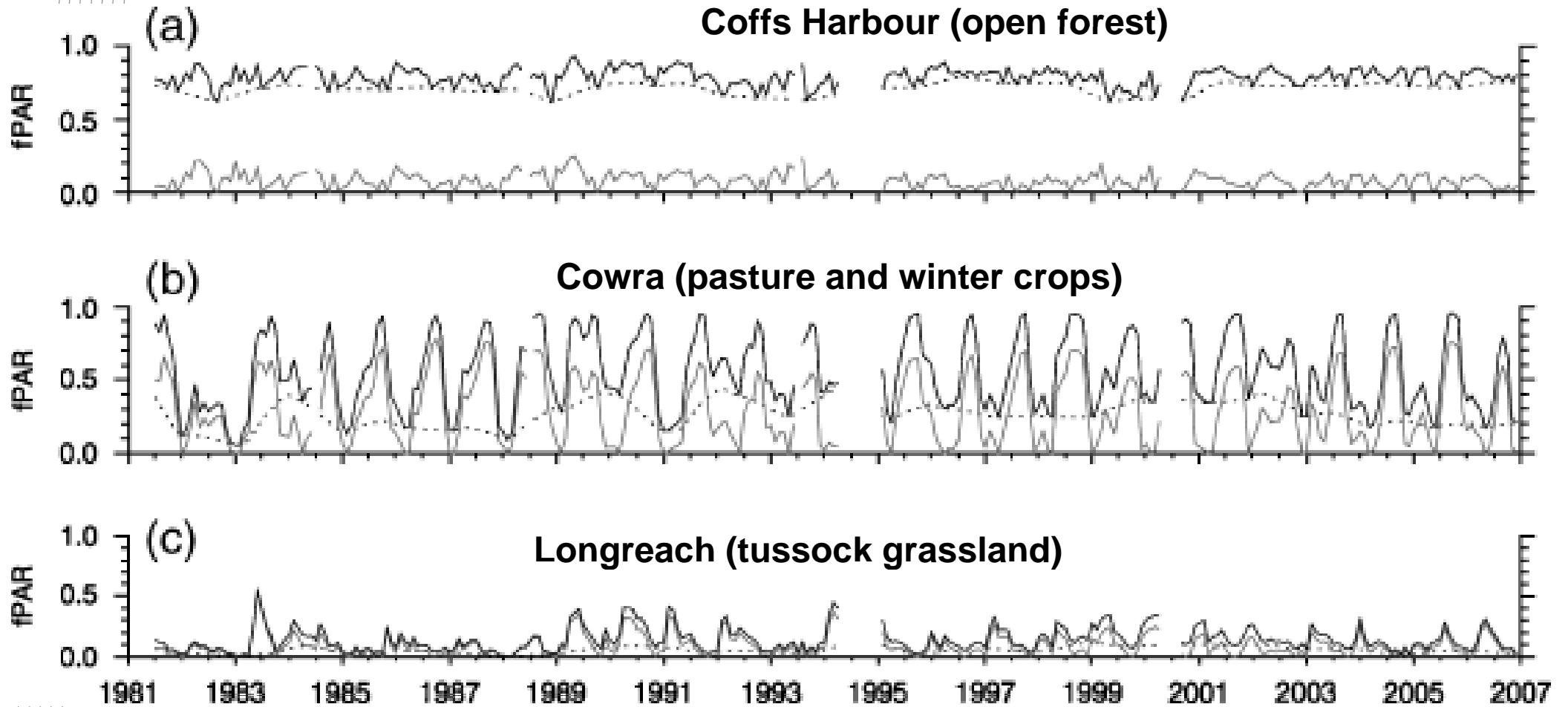
Generic Land Surface Model



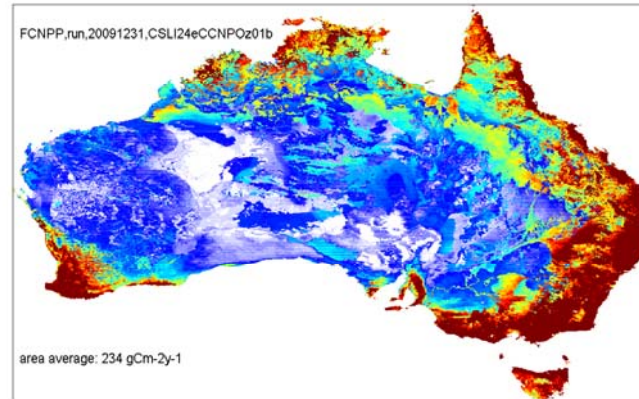
Generic Land Surface Model: Cut-down!



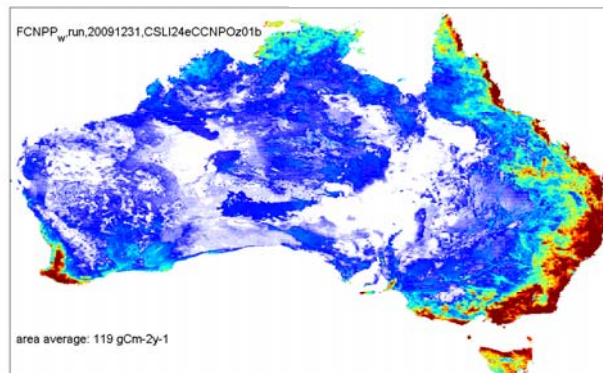
Woody/Grassy partition: Donohue et al. 2009



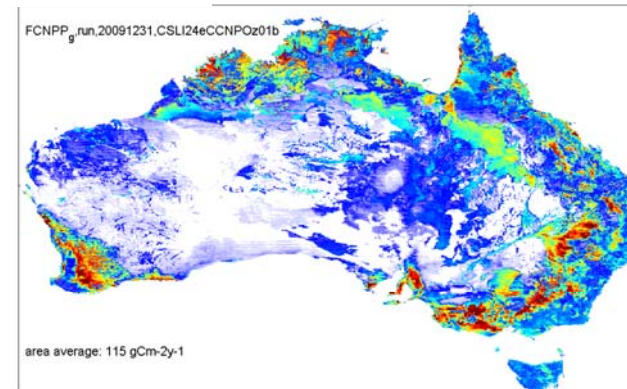
CABLE-SLI Continental NPP: equal contributions from woody and grassy vegetation.



Total NPP: 234 gCm⁻²

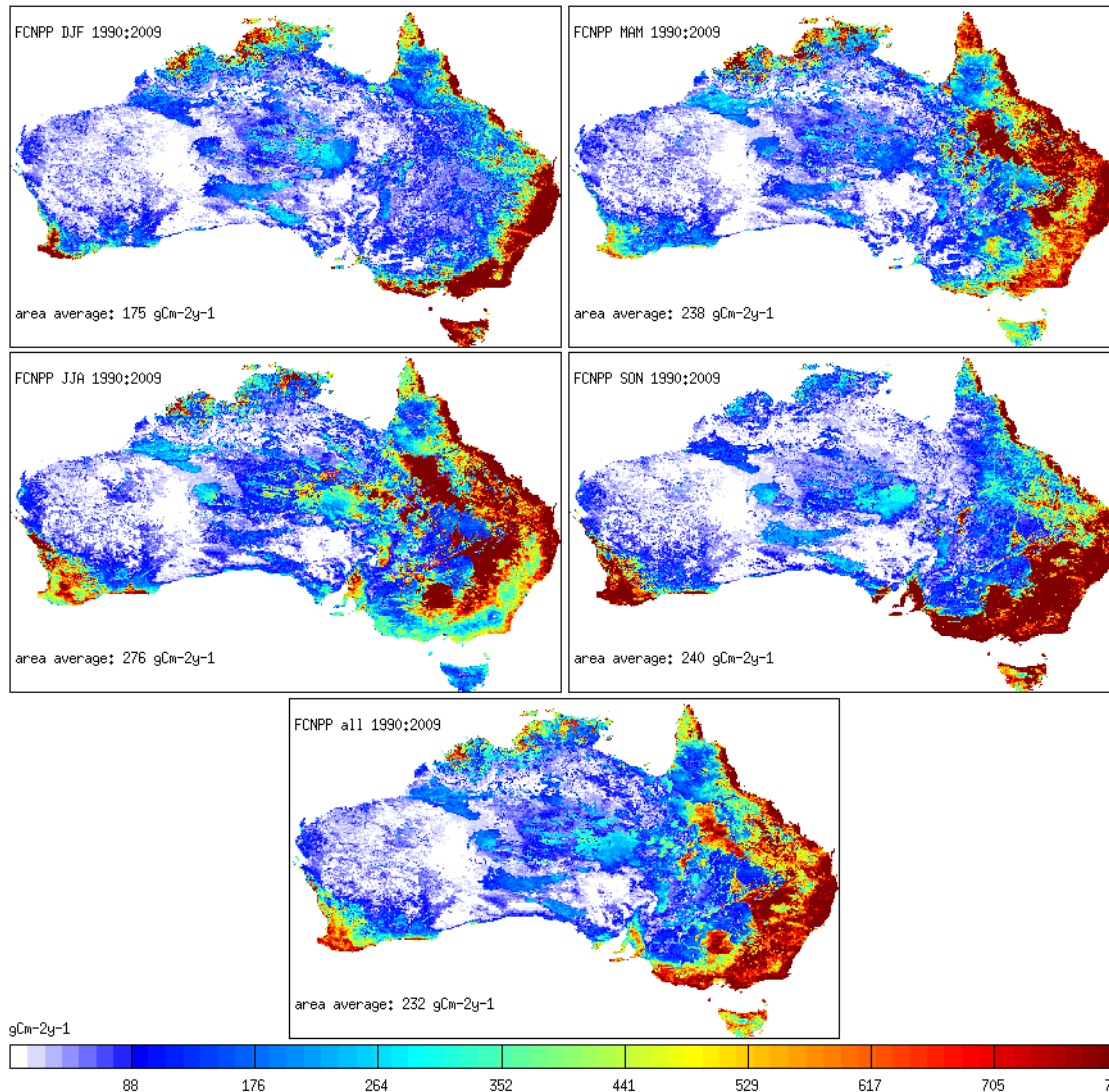


woody NPP: 119 gCm⁻²

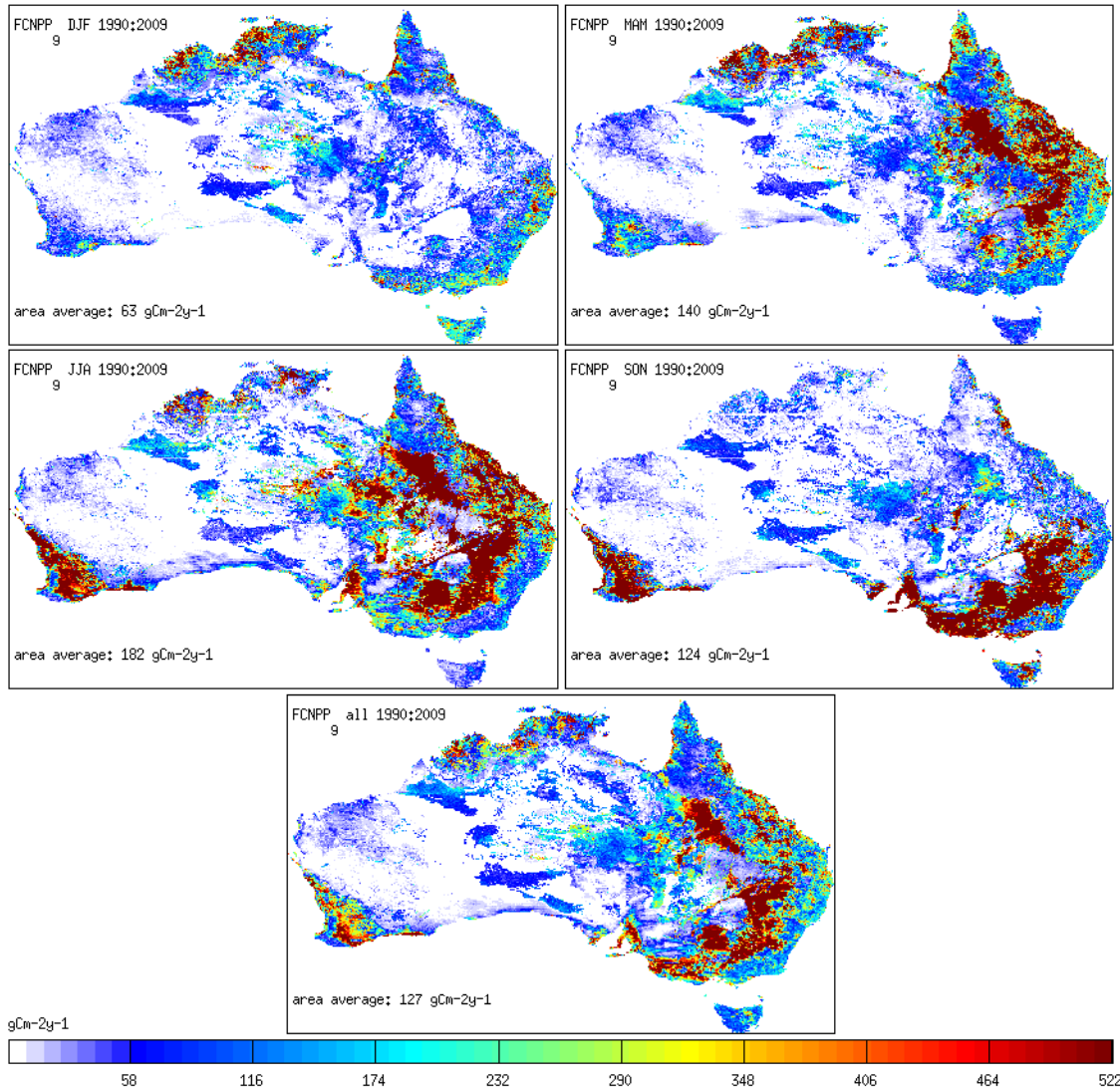


grassy NPP: 115 gCm⁻²

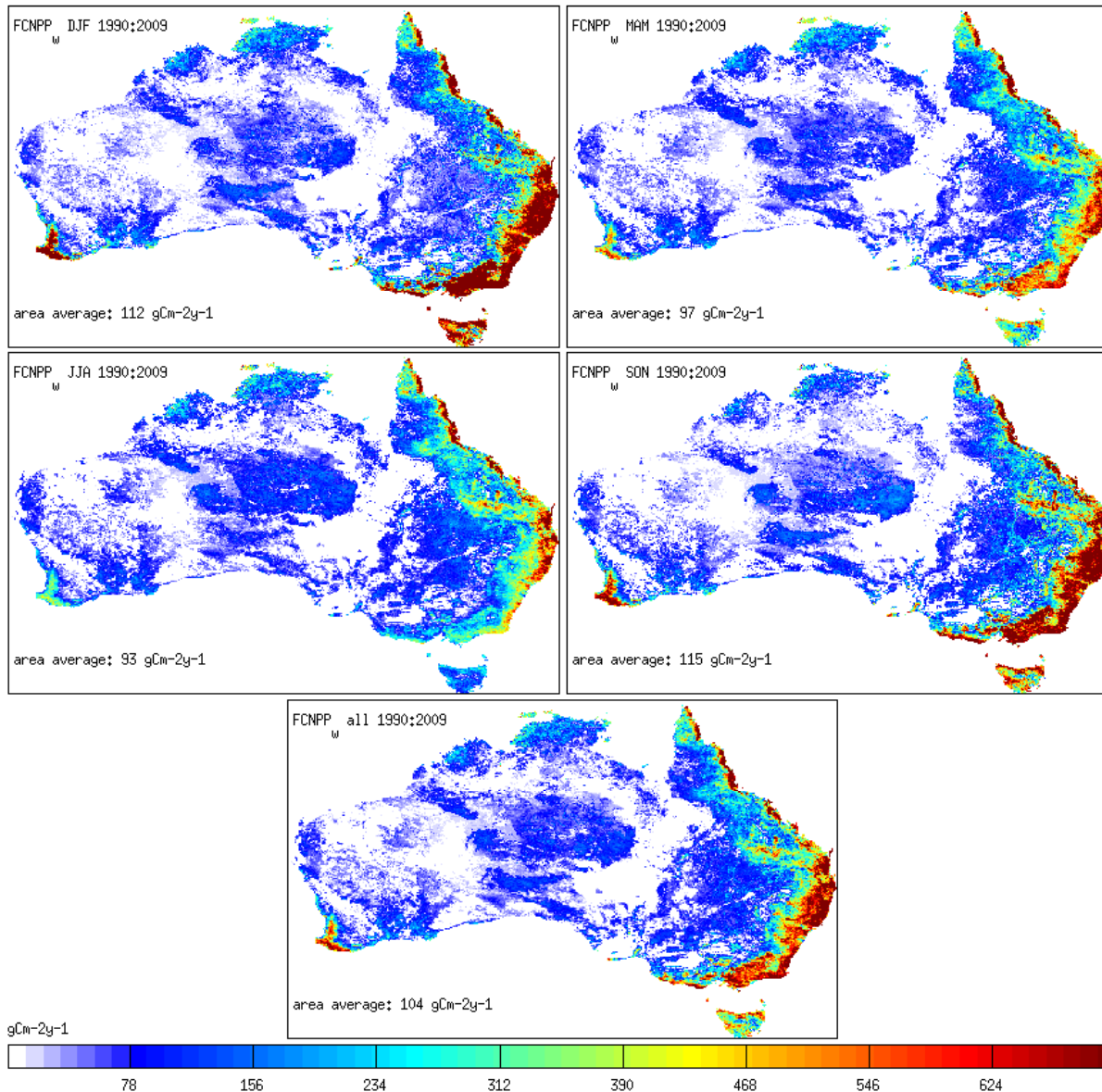
Seasonal NPP



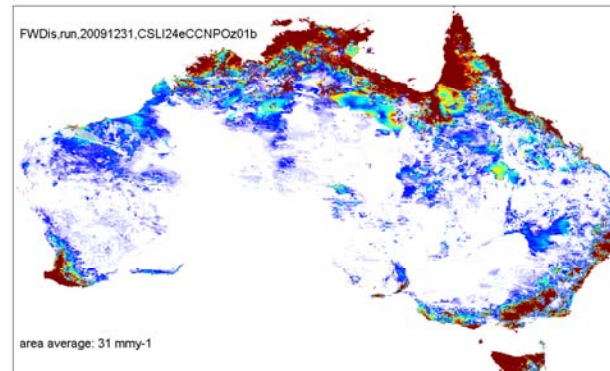
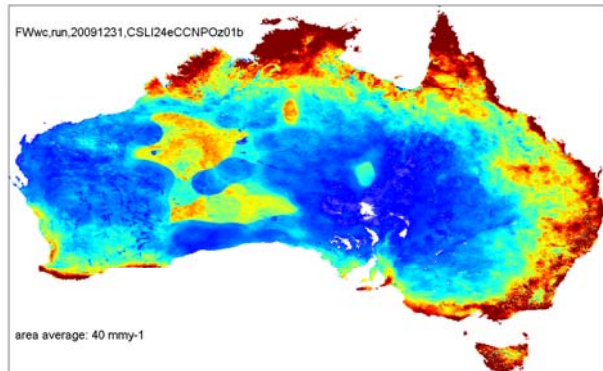
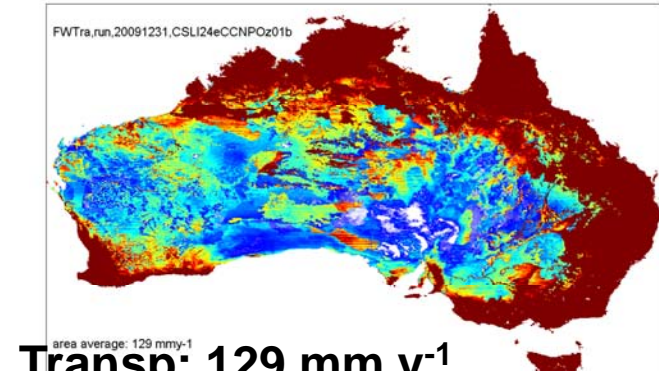
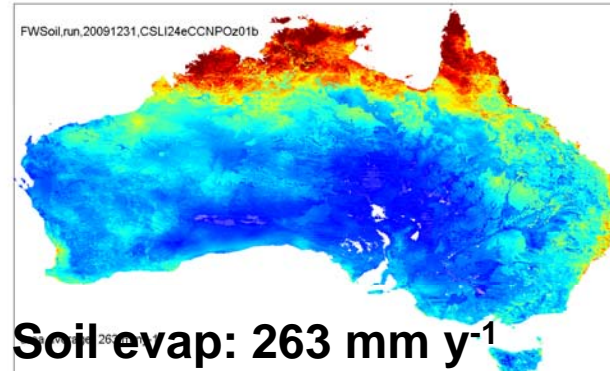
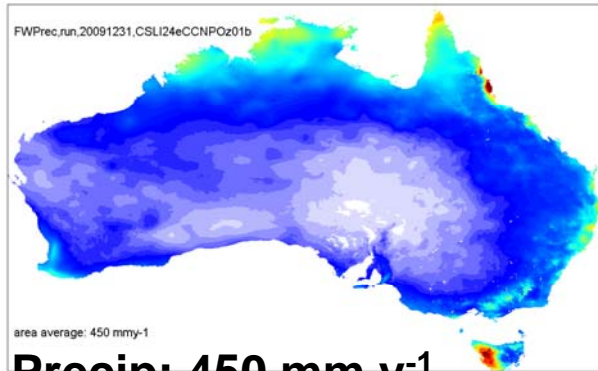
Seasonal NPP: grassy



Seasonal NPP: woody



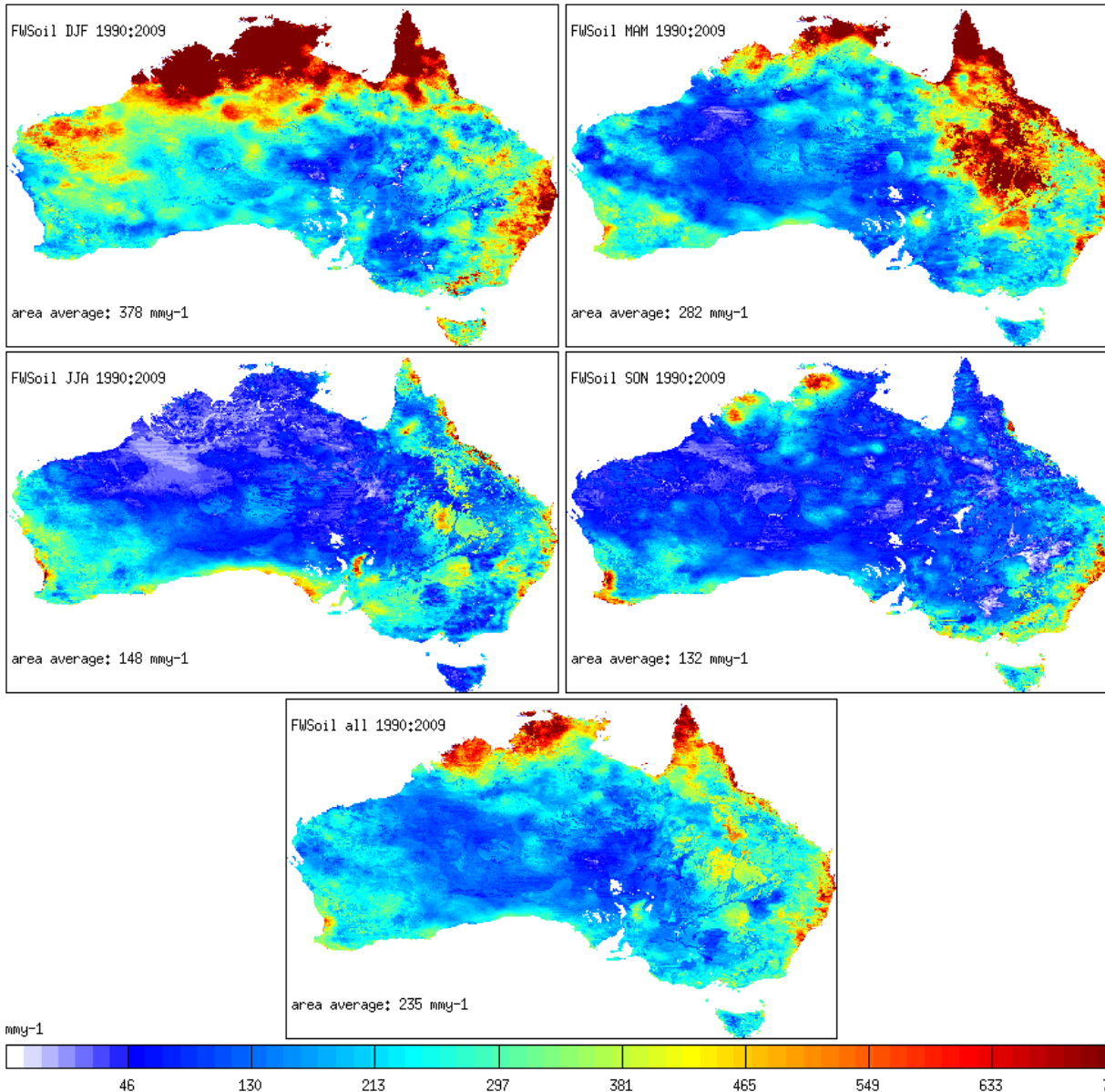
Continental water balance: 2000:2009



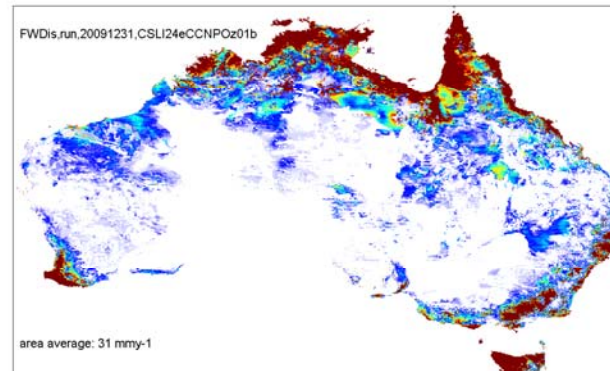
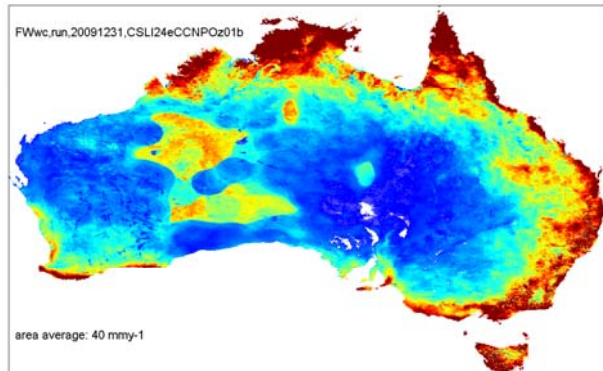
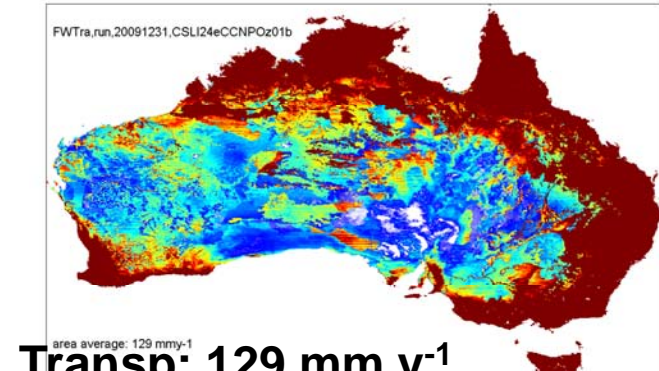
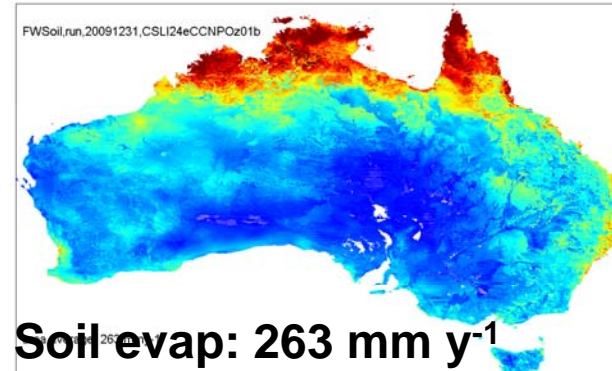
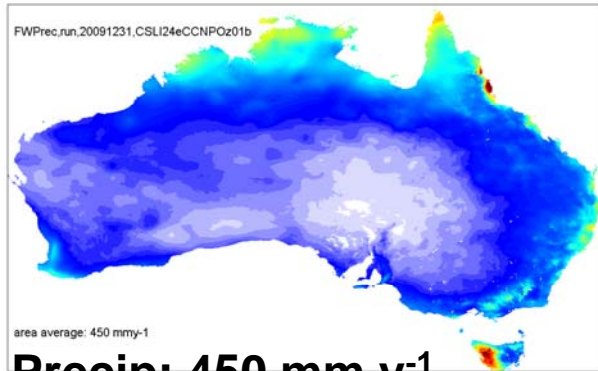
Wet canopy evap: 40 mm y⁻¹

Discharge: 31 mm y⁻¹

Seasonal Soil Evap



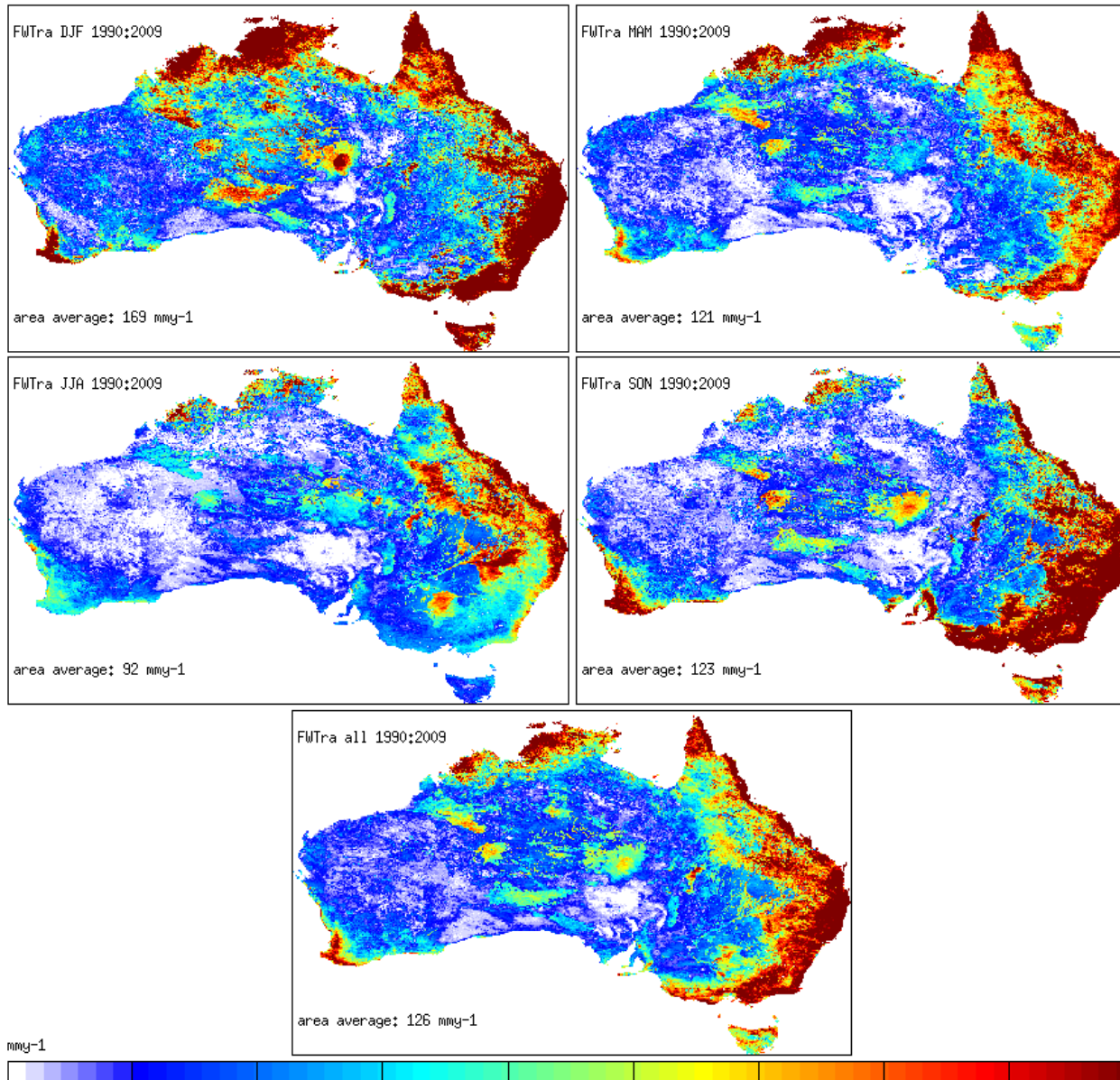
Continental water balance: 2000:2009



Wet canopy evap: 40 mm y⁻¹

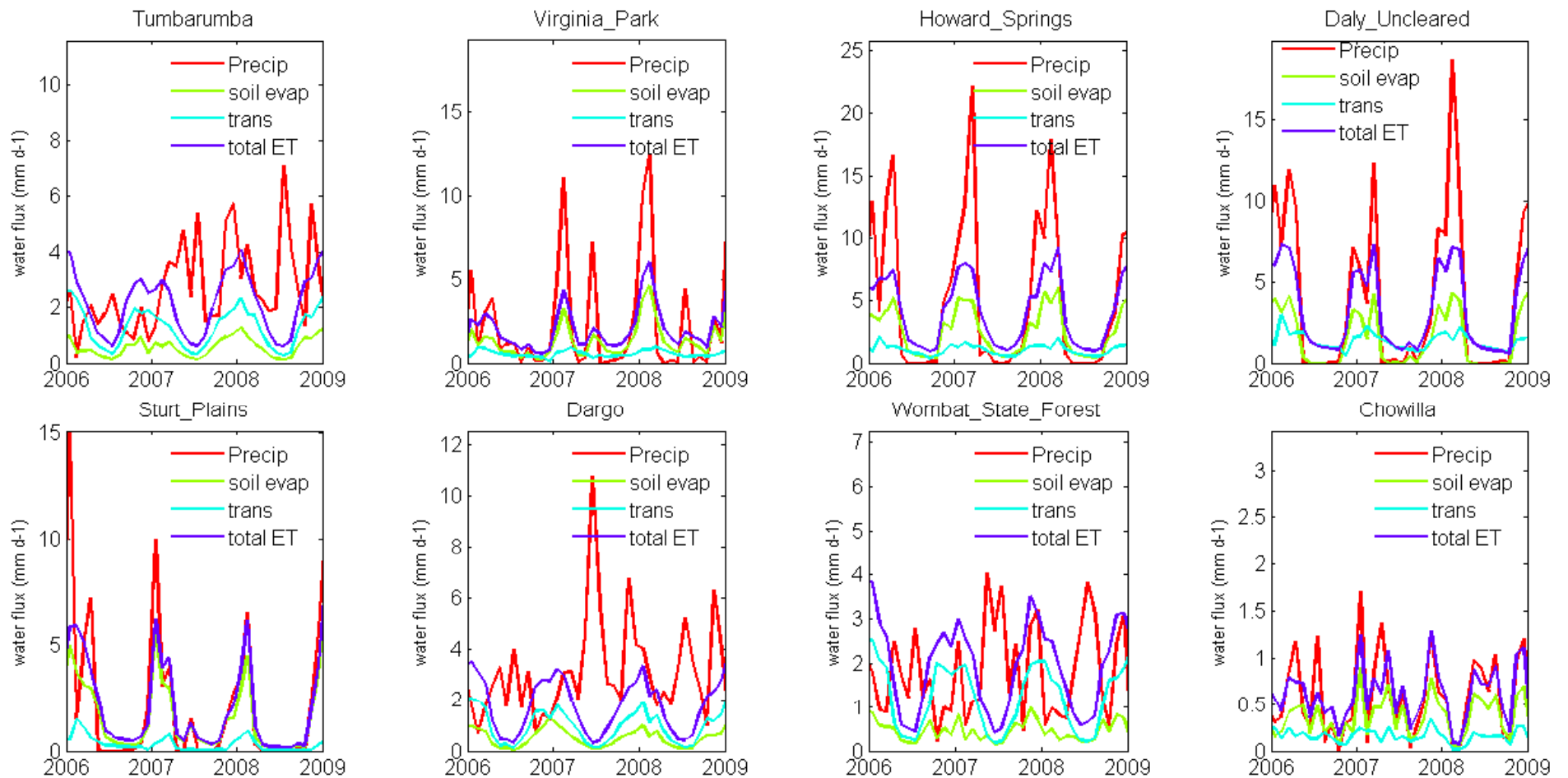
Discharge: 31 mm y⁻¹

Seasonal Transpiration

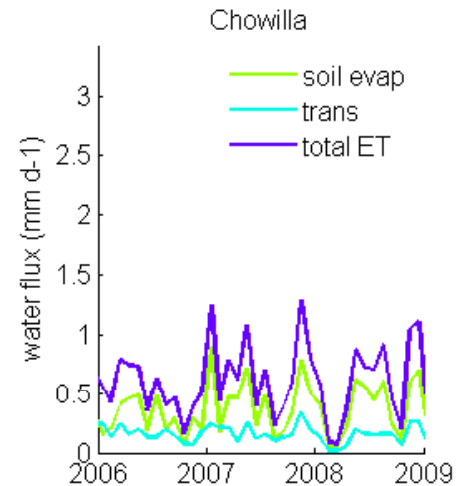
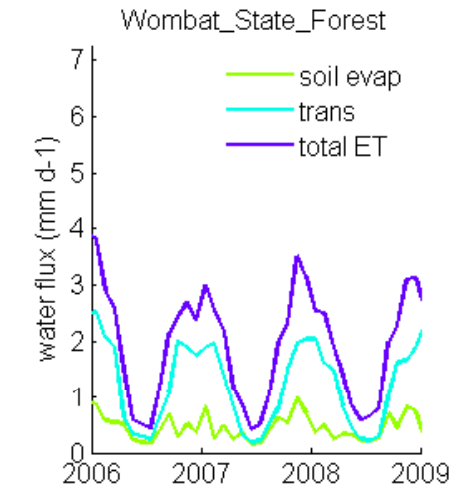
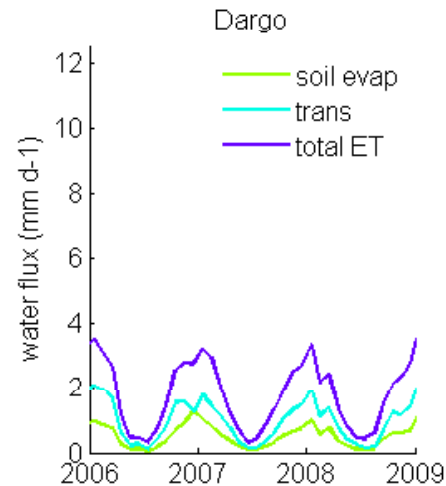
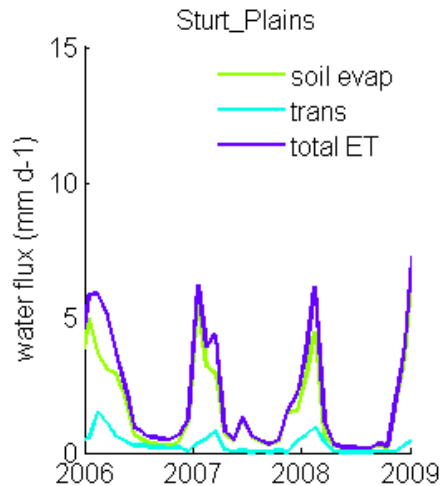
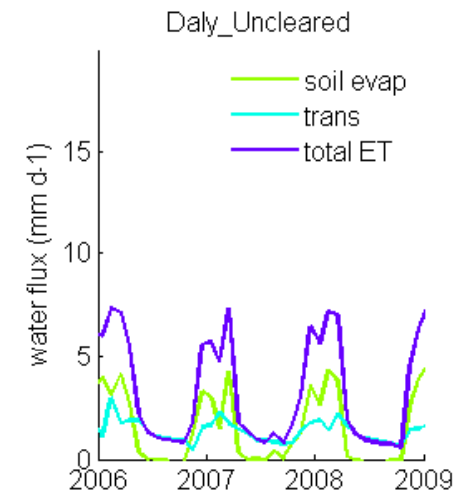
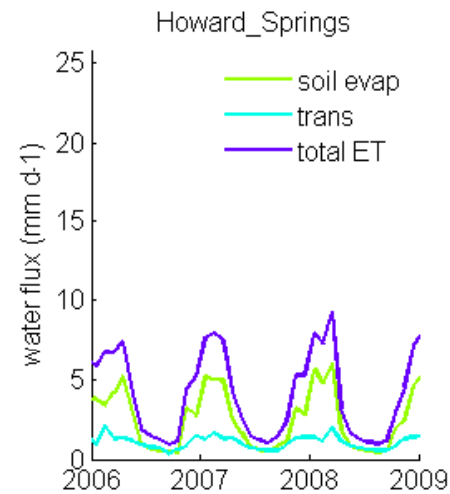
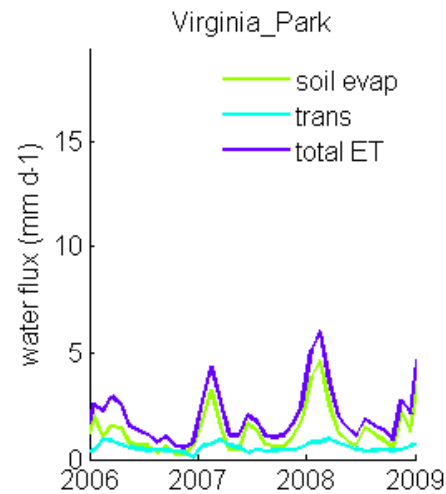
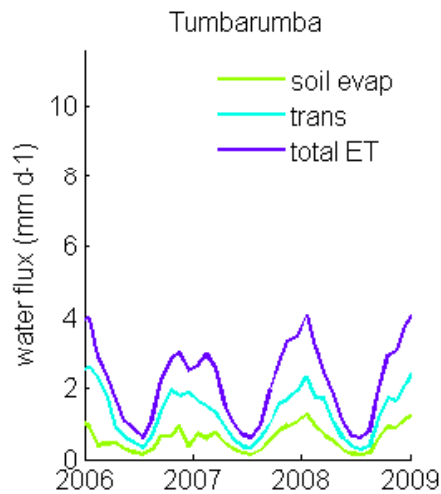


The OzFlux Laugh Test...

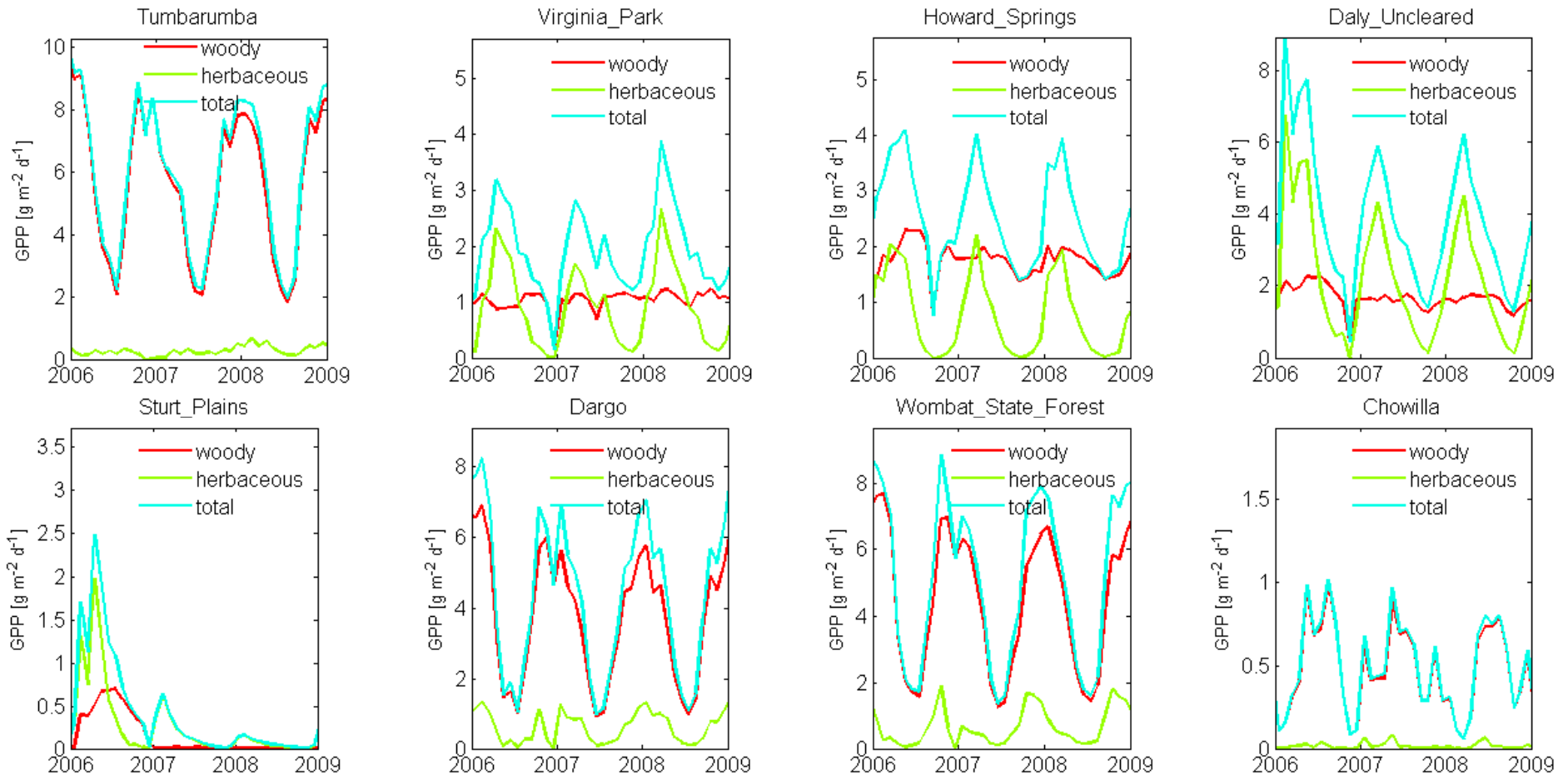
Precip and evap



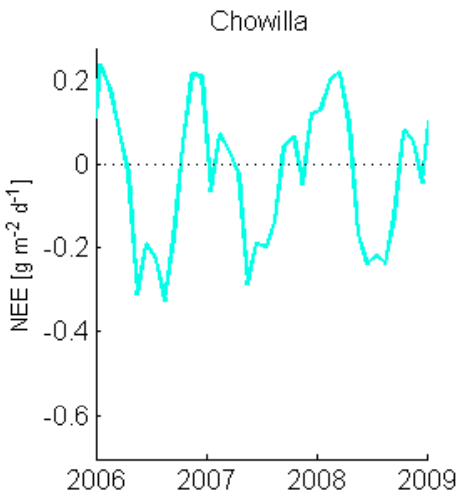
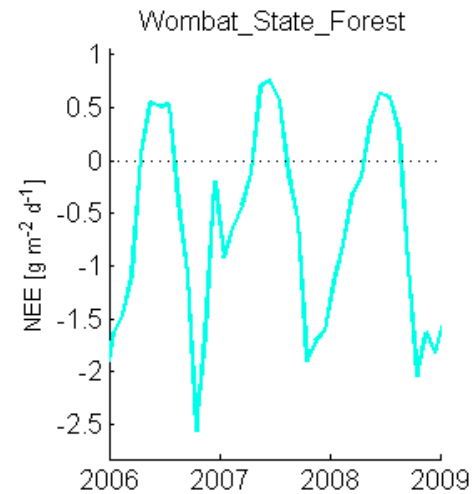
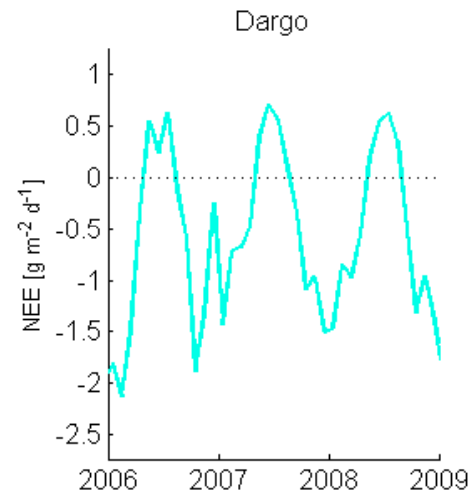
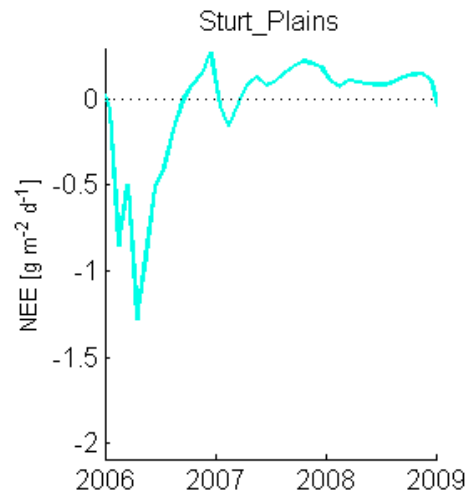
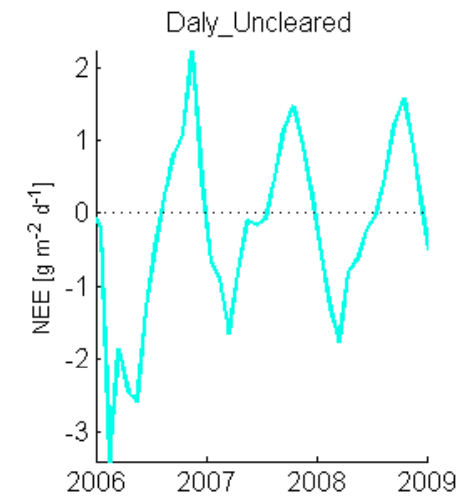
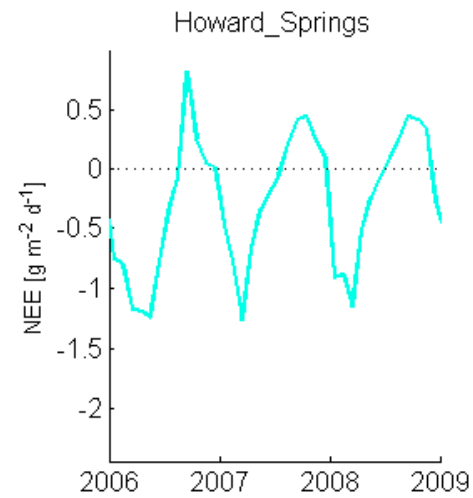
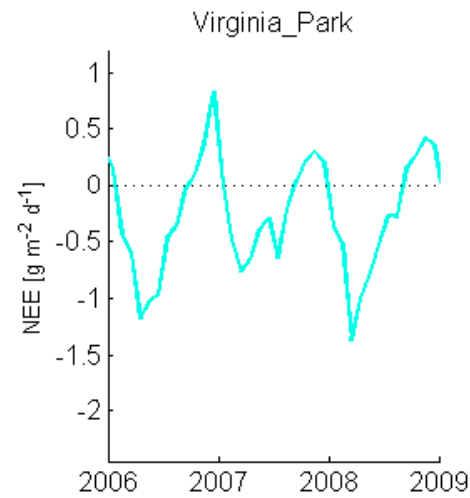
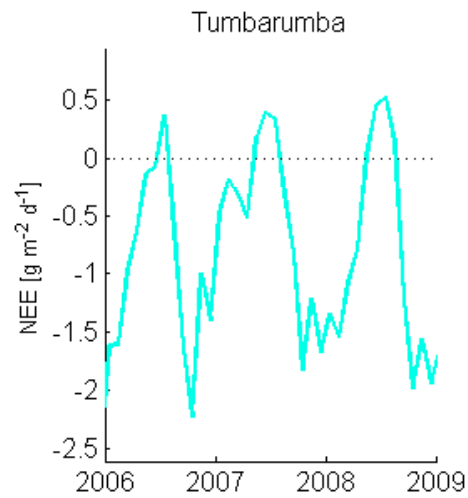
Ozflux: ET partition



Ozflux GPP: woody/grassy partition



Ozflux NEE



Information Exchange

- How well are we representing your flux site?
 - Evaluation for RECCAP Australia paper (due Nov 2011)
 - And for future refinements...
- Do your flux data pass the CABLE-SLI-CASACNP laugh test?
 - Would it be useful to make model estimates available to observationalists?
 - Particularly for new flux sites
- Access to gridded daily SILO meteorology, downscaled to hourly numbers
- Renewed effort to make CABLE a community-based model
 - Contact Rachel.Law@csiro.au